

Model : OCEANIS 40.1

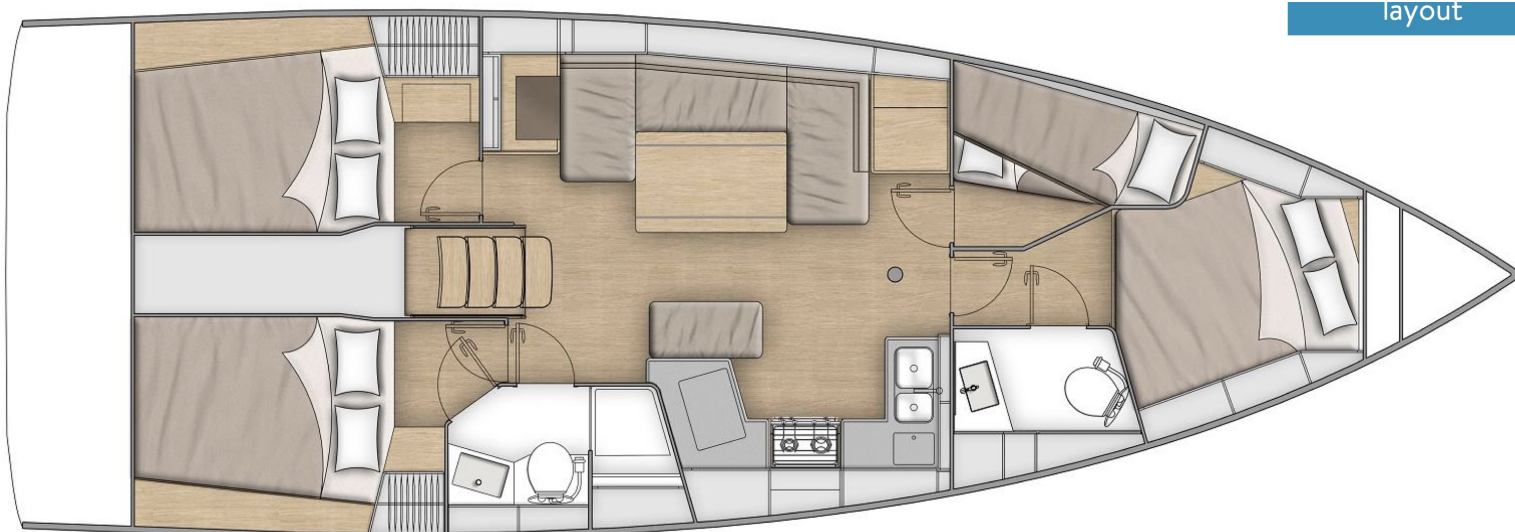
Availability : week 36

Version

- *0 **Zone de navigation** 0001 - EUROPE AREA
- *1 **ENGINE** 1XD0 - YANMAR 4JH45 CR SHAFT LINE 33KW (45HP) DIESEL
- *2 **BALLAST** 210 - SHALLOW CAST IRON KEEL
- *3 **ACCOMMODATIONS** 3K6K - 4 CABINS 2 HEADS VERSION - WALNUT ALPI
- *9 **SPECIFICATIONS PRODUIT** 9Q1 - KEELED BOAT

Options

- F **TRIM LEVEL** 21VCD - FAMILY TRIM LEVEL
- *5 **UPHOLSTERY** 5K601 - NEO 05 - UPHOLSTERY IN SALOON
- P **PACKS** A33 - UPWIND PACK
- P **PACKS** R21A - COASTAL PACK - B&G
- BA MOORING AND ANCHOR LINES** B20 - AFT FAIRLEADS
- BA MOORING AND ANCHOR LINES** C02 - WINDLASS CONTROL IN COCKPIT WITH CHAIN COUNTER
- BE EXTERIOR LAYOUT** T17P - LUXE POLYESTER COCKPIT TABLE - WITHOUT COVER
- PB HULL STRUCTURE** C01 - WHITE HULL STD
- RD DOCUMENTS & PLATES** M02GR - ENGLISH OWNER'S MANUAL
- RN NAVIGATION INSTRUMENTS** M91RE - EUROPE B&G CARTOGRAPHY
- VR OPENING GLAZING ROOF VENTILATION** H10 - OPENING PORTHOLE IN THE COCKPIT FOR AFT CABINS
- ZZ SPECIFICATIONS** GRE99 - SPECIFICATIONS GRECQUES



F21VCD - FAMILY TRIM LEVEL

Plain solid wood decked helmsman seating
2 Halyard bags
Electric windlass (1 000 W) - Remote control
Hot/cold water cockpit shower
LED courtesy light in cockpit
Saloon: LED indirect lighting
Galley: Stainless steel cooker 2 burner oven/grill on gimbal
Galley: Front opening for icebox
Galley: Compact sink cover Clay with cutting board
Hifi Fusion + Interior loudspeakers & Waterproof exterior speakers
1 USB port dual port in the saloon and in each cabin
Full 230 V system (6 Inside sockets, 1 Shore power socket)
60 Amperes battery charger
2 Additional service batteries
AGM 100 Ah batteries with replacement of standard (engine and servo)
Battery charge display, Navicolor screen
Mosquito nets for opening portholes
Aft transom protection
Bow fender
Outboard engine bracket
Saloon: Double berth
Galley: Sea water/fresh water foot pump
Additional freshwater tank (330L / 87 US Gal)
Ventilators in the saloon and the cabins

PA33 - UPWIND PACK

Rigging run back to cockpit (except boom topping lift)
2 Genoa winches (H46.2 STA)
Additional jammers
Genoa sheet tracks on side decks (pulls back the traveller on the self-trimming jib rail)
Furling Dacron genoa (to replace the standard self-tacking jib)

PR21A - COASTAL PACK - B&G

to port: 1 Triton 2 Graphic display
Starboard helmstation: 1 Multifunction touchscreen Zeus 7"wide wireless (GPS, Chart plotter, Card reader - Navionics Silver cartography included)
Sensor (Log, Speedometer, Temperature)
Wind Sensor (Windvane, Anemometer)
Windex Windvane
NAC3 autopilot + Control

ATMOSPHERE

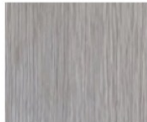
STANDARD

WOOD
BOIS



Walnut Alpi
Alpi Noyer

FLOOR
PLANCHER



Laminated Rovere
Alévé floors
*Planchers stratifiés
Rovere Alévé*

PADDING
CAPITONNAGE



Beige

UPHOLSTERY
SELLERIE



Néo 05
Néo 05

OUTDOOR



Silver
Silver



Dolce 51
Dolce 51

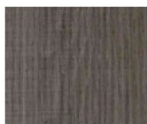
OPTION

WOOD
BOIS



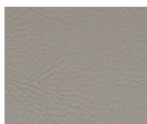
White oak alpi
Alpi chêne flotté

FLOOR
PLANCHER



Laminated brown Oak
Stratifié chêne brun

PADDING
CAPITONNAGE

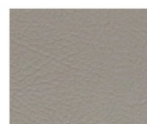


Taupe
Taupe

UPHOLSTERY
SELLERIE



Chine moka
Chine moka



PVC taupe
PVC taupe